



Foresight Future of an Ageing Population

Draft findings and policy implications

The Future of Ageing Research: Post REF 2014 – British Society of Gerontology

Tom Wells

@_tomwells

November 2015



- How government receives knowledge from ageing research?
- What is the purpose of the Foresight programme and how has the research community been involved?
- What is the way forward for this source of knowledge transfer?



“Helps make decisions today that are resilient to the future”

- Foresight delivers major 1-2 year studies looking at key issues 10 - 100 years in the future
- Subjects where science and technology are the main drivers for change, or offer key solutions.
- Scientific evidence is our foundation
- **We exist to inform policy-making**





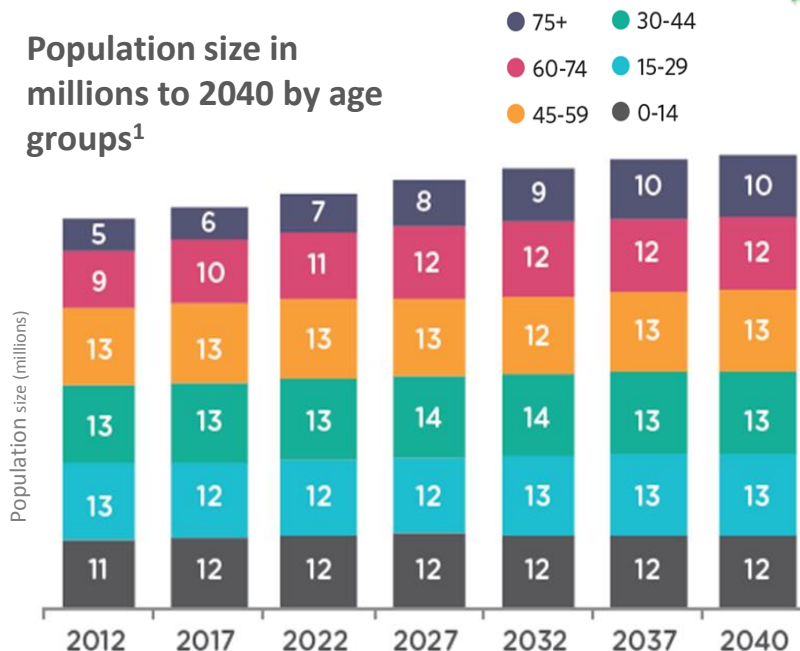
The project:

- Expert-led
- Evidence based
- 2025 and 2040
- Policy-focused: working with Whitehall, Policy Lab and EDS
- Underpinned by public engagements across the UK
- Focussed on the life course and population ageing

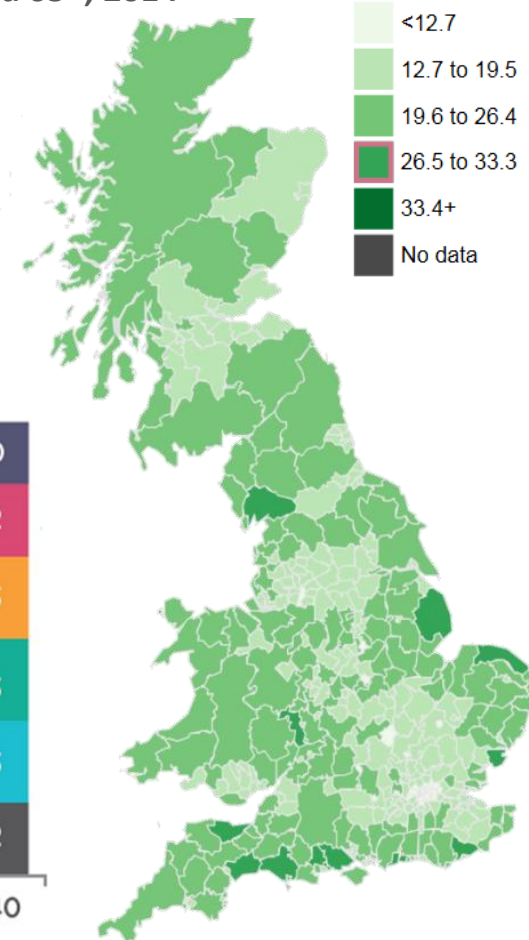
Due to complete in
March 2016

Approximately 75% of UK projected population growth between 2012-2040 is in the 60+ group.

Of the additional 10.6m people in the ONS central projection to 2040, 7.7m of them are over 60.



Percentage of the population aged 65+, 2014²



1. Source: ONS Central projection, Foresight analysis, 2. Source: ONS



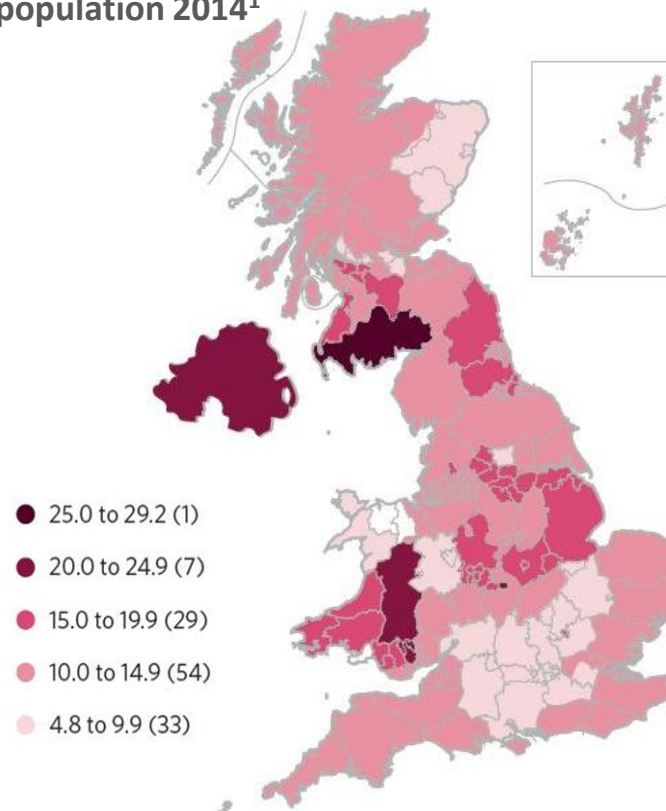
Solutions from technology

Policy challenges include:

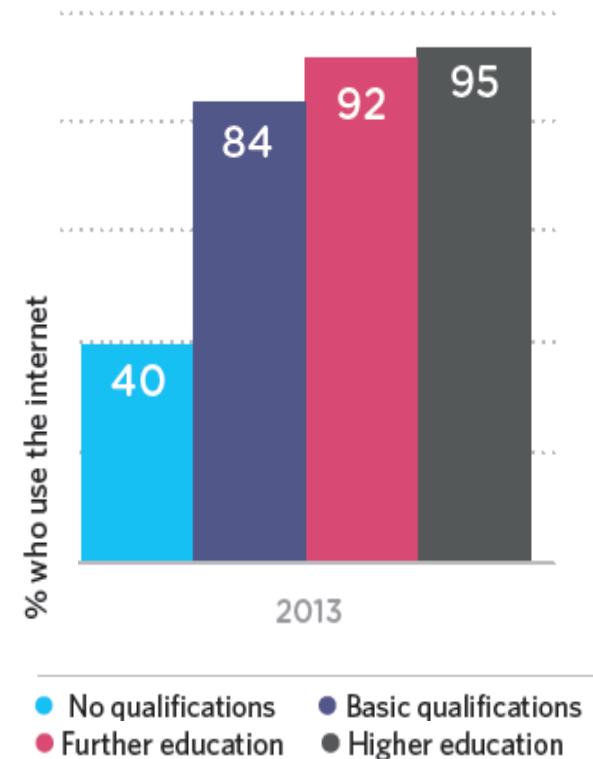
- Access and uptake of technology – across population and in older cohorts.
- Innovative business models aimed at deploying technologies for older populations

Technology can provide solutions to some of the challenges, yet roadblocks will prevent efficiency & welfare benefits

Internet non-users % of population 2014¹



Internet use by educational qualifications²



1. Source: ONS, 2. Source: Dutton and Blank 2013



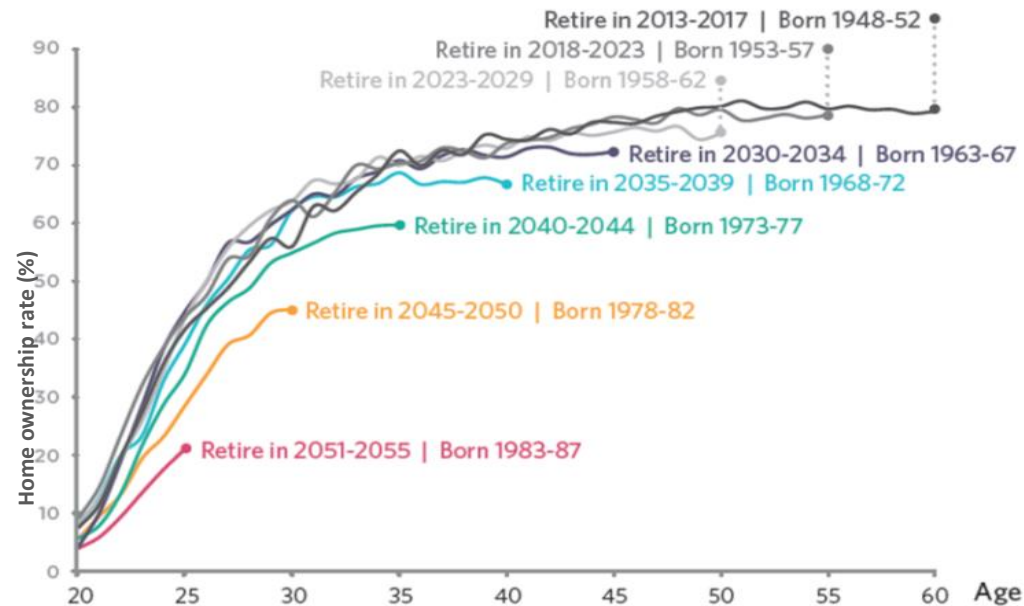
Suitability of housing

Policy challenges include:

- Housing stock appropriate for older population
- Supporting choice: 'rightsized', specialised or adapted housing
- Design of neighbourhoods for wellbeing, services, community through the life course

Is housing suitable for an ageing population? Declining home ownership rates place pressure on retirement incomes.

Home ownership rates by birth year and age¹



Comparison of housing to other common health hazards (costs to the NHS)



* A group of dwellings intended for older people and served by a resident or non-resident warden/scheme manager with specific responsibility for the group
1. Source: Family expenditure survey and family resources survey, 2. Source: DCLG

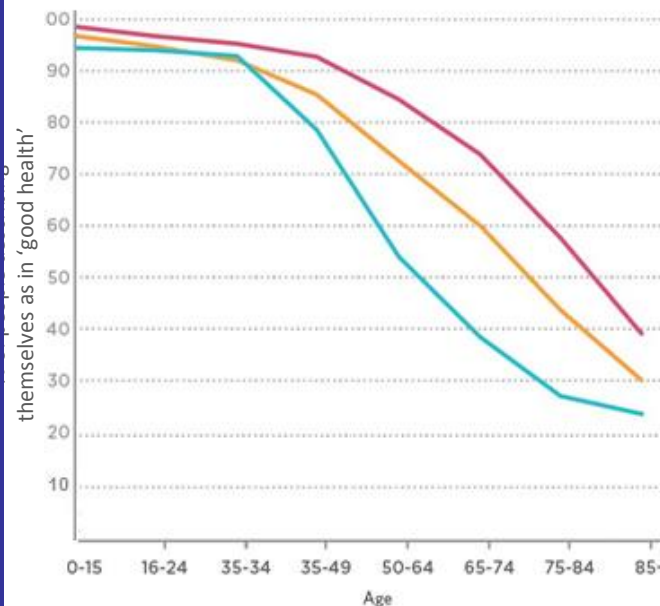
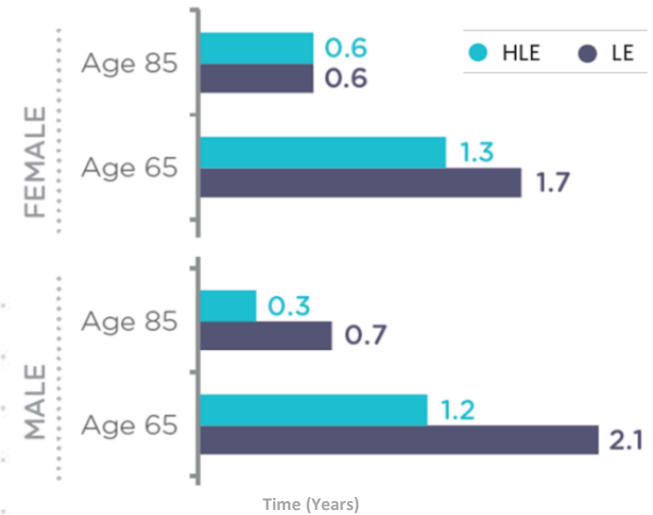


Policy challenges include:

- Configuration of health & care services for increasing prevalence of chronic diseases
- Homes to enable wellbeing & care to reduce pressures on the NHS
- Supporting carers to maintain quality of life balancing employment & caring

Increased life expectancy also carries greater care costs and significant regional variations in health outcomes

(Right) Number of years gained between 2002 and 2011 in life expectancy (LE) and healthy life expectancy (HLE) at ages 65 and 85²



(Left) Regional variation in self-assessed good health by age group¹

Hart (top) England Tower Hamlets (Bottom)

1. Source: ONS, National Records of Scotland and Northern Ireland Statistics and Research Agency, Foresight analysis, 2. Source: ONS



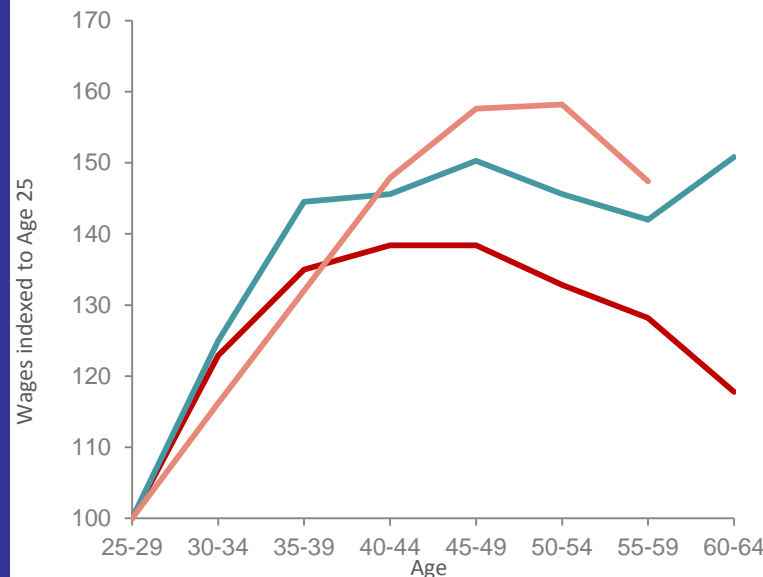
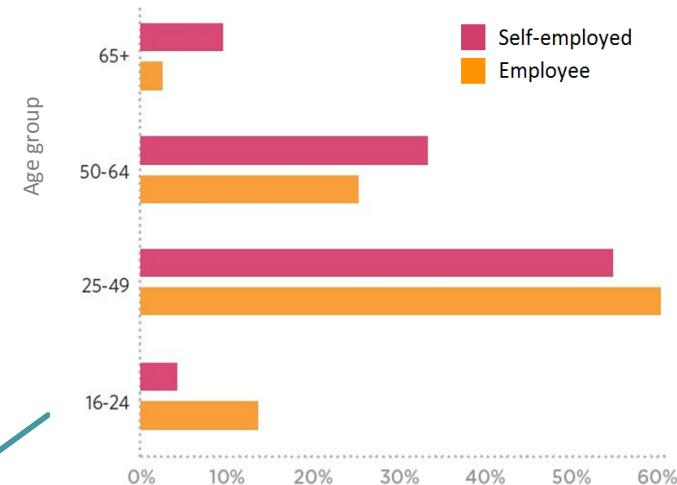
Extending working lives

Policy challenges include:

- Adapting workplaces – and role of employers?
- Supporting flexible working practices
- Awareness and appetite for investing in training for older workers

Enabling people to work longer could be facilitated by changes to workplaces, training availability, and attitudes

(Right) employment status of working people, by age group²



(Left) Wage* indexed to age 25 (2010, age 25 = 100)¹

— UK — US — Japan

* Average annual wages per full-time equivalent employee
1. Source OECD, 2. Source: ONS, Foresight analysis



- Not the final word - Keen to work with Research Councils and Centre for Ageing Better
- Evidence: from 'What' to 'What Works'?
- Cost-benefit?



 @_tomwells

 @foresightgovuk

www.gov.uk/go-science

tom.wells@go-science.gsi.gov.uk

Every effort has been made to trace copyright holders and to obtain their permission for the use of copyright material. We apologise for any errors or omissions in the included attributions and would be grateful if notified of any corrections that should be incorporated in future versions of this slide set. We can be contacted through contact@go-science.gsi.gov.uk.